



Providing Space for the Community



Events for 2025 in the Community Centre

Date for diary

Saturday 15th November Centre Quiz & Supper Night. Please see poster on page 8 for details

Regular Activities

Children's groups in [blue](#).

Monday

Zumba Gold 10 – 11am
[Tiny Tykes toddlers 9.45 – 11.15am](#)
[The Wellbeing Junction 15.45 – 18.45](#)
Music & Movement 16.15 – 18.15
CA Meeting 19.00 – 20.00
Pilates with Sally 19.30 – 20.30

Tuesday

Big Movers 10 – 11am
[LUNCH CLUB 12.30 – 13.30](#)
Herts. Mobilisation 13.30 – 15.30
[Imagine & Move 16.30 – 18.00](#)
[Savage Martial Arts 16.45 – 18.15](#)
[Girl Guides 19.00 – 21.00](#)
Pilates with Sally 20.00 – 21.00

Wednesday

Pilates with Sally 10 – 11am
[Tippy Toes Ballet from 15.30 – 17.30](#)
[Brownies 18.30 – 20.00](#)
Art Box every other week 13.00 – 15.00
Pilates with Joanne 19.00 – 20.00

Thursday

[Tiny Tykes toddlers 9.45 – 11.15am](#)
Line Dancing 10 – 11am
Chair Yoga with Helen 12.00 – 13.00
[LUNCH CLUB 12.30 – 13.30](#)
Herts. Mobilisation 13.45 – 16.45
[The Wellbeing Junction 15.30 – 17.30](#)
Line Dancing 19.00 – 20.00
Calm the mind Yoga 19.00 – 20.00

Friday

Yoga 9.30 – 10.30am
Pilates with Joanne 10 – 11am
Senior Exercise 11am – noon
[LUNCH CLUB 12.30 – 13.30](#)
Big Movers 14.00 – 15.00
Friendship Hobby Craft 14.00 – 16.00
CA Meeting 19.30 – 20.30

Saturday

Party slot times

[Kennedy Suite 11.00 – 14.00,](#)
[14.30 – 17.30 & 18.00 – midnight](#)
[Rear Hall 10.30 – 13.30 &](#)
[14.00 – 17.00](#)

Sunday

Church Service 9.30 – 12.00
Pastor Michael David
[Party slot times](#)
[Kennedy Suite 14.00 - 17.00](#)
[Rear Hall 14.00 - 17.00](#)

Monthly

Councillors Surgery

The local councillors hold a monthly surgery on the second Saturday of the month. Meetings are held in the coffee shop. If there are any confidential matters you will be taken to the office

Please note 11th Oct, Nov 8th & Dec 13th are the next sessions between 10-11am

Cllr Lin Martin-Haugh 01438 351467 email lin.martin-haugh@stevenage.gov.uk
Cllr Tom Plater 07986 543762 email tom.plater@stevenage.gov.uk
Cllr Jeannette Thomas 01438 721258 email jeannette.thomas@stevenage.gov.uk

Meet the Team

Head of Trustees
Cllr Lin Martin-Haugh

Centre Manager
Sophie Jenkins

Office Assistance
/Invoicing
Karen Robson

Social Media
Events Co-ordinator
Carol Jennings

Coffee Shop Manager
Sally

Supervisor
Holly - Maternity leave
Jackie – Maternity cover

Coffee Shop Assistance
Week days **Judith M**
Weekends **Mackenzie & Ruby**

Sunday Supervisor
Lucy

Volunteers
Rita, Sue, Ann
& Angela

Caretakers
Mark & Katie

Cook
Carol C

Volunteers
Tracy

COFFEE SHOP

Our Coffee Shop is open 7 days a week & sells a variety of different coffees, plus a selection of teas, hot chocolate and cold drinks including milkshake. We have a selection of hot food and snacks, with a choice of cake for your afternoon tea. Specials are a Bacon Roll & coffee served all day or a slice of cake with a pot of tea or any coffee or speciality tea.

We haven't forgotten your Canine friends, we sell dog biscuits (all profits go to charity every month) and we put out a bowl of water for them too. Well behaved dogs on leads welcome.

You can find us on Trip-advisor or Facebook: [Hampsonparkcoffeeshop](#) or on the centre website www.hampsonparkcc.co.uk- cafe



Opening hours throughout the year.

Monday to Friday

From 10.00am to 4.30pm

Saturday 9.00am to 3.30pm

Sunday 9.00am to 3.30pm

Closing time may vary depending on weather



COFFEE SHOP MENU

Drinks Price list

	Regular & Large	
Americano	£2.60	£3.00
Latte	£3.00	£3.60
Cappuccino	£3.00	£3.60
Mocha	£3.60	
Espresso	£2.20	£2.60
Hot Chocolate	£3.00	
with cream/marshmallows		£3.60
Mug of Tea	£1.20	
Herbal/Speciality Tea	£1.60	
Milk (children)	£1.20	
Milk Shakes	£1.00	
Toppings-Milk Shakes	£0.50	
Fruit Shoot	£1.10	
Canned drinks:-		
Normal	£1.30	
Zero/Sugar free	£1.10	
Bottled Water	£1.10	
Squash from	£0.70	
Soya or Almond milk, skimmed or semi available		

Snacks

Bacon Roll	£3.40, Sandwich	£3.60
Sausage in a roll	£3.60	
Sausage sandwich	£3.80	
Kids Bacon Roll	£1.30	
Pastry Sausage Roll	£2.00	
Bacon Roll with coffee offer	£5.00	
Jacket potato & butter	£3.50	
Jacket Potato with Cheese/Beans		£4.50
Jacket Potato with Tuna & Mayo		£5.00
Extra toppings from	£1.00	
Panini - Ham & Cheese	£4.30	
Panini - Cheese & Tomato	£4.00	
Panini Sausage, Cheese & Chutney	£4.80	
Panini Tuna Melt	£4.50	
Toasties Cheese & Tomato	£3.50	
Toasties Cheese & Marmite	£3.60	
Toastie Ham & Cheese	£3.80	
Toast 2 Slices	£1.70	
Toast and Jam	£2.20	
Cheese on toast	£3.70	
Luxury Teacake	£2.50 (Jam 50p)	
Cake Slice from	£3.20	
Children's Crisps from	£0.50	
Ice Lollies & Ice Cream Tubs from		£0.80
Special offers		
All day special slice of cake with tea or coffee	£5.00	
Some Gluten Free and Vegan available		

Art Box

Runs every other Wed's for people with early-stage Dementia & their carers 13.00 – 15.00 Checkout their website openartbox.org.uk or you can email artists@openartbox.org.uk

Big Movers

This exercise group is for people with Parkinson's
Here on a Tuesday @ 10 -11am. Friday 14.00 – 15.00
£4 per session, discount for attending both Tuesdays & Fridays sessions in the same week. New Members the first week free. Phone Pete **07505 363021**

Brownies

Meet on a Wednesday @ 18.00 – 19.30, for places contact Tracey on **01438 723619** or email twrd496@gmail.com

CA Meeting

Struggling with a drug addiction? Support groups every Monday 19.00 – 20.00 & Friday evening 19.30 – 20.30

Calm the mind Yoga Starting on Thursday 2nd October. Class time is 19.00 – 20.00. Contact Hayley Brown on **07432 000857** or info@naturalhealinghaven.co.uk

Chair Yoga

With Helen O'Sullivan on Thursdays 12.00 to 13.00. Are you looking for a yoga exercise class that you don't have to lay on the flooring for? Then how about trying chair yoga. Exercise to help you get your joints moving. Please book by either ringing Helen on **07923 975198** or email hos55@hotmail.co.uk

Friendship Hobby Crafts

Small group that runs on a Fri 14.00 – 16.00. Time to socialise with others in the group, just bring along what ever project your working on. Share your knowledge about a different craft, or learn something new. Most of all make new friends why you do something you enjoy.

Imagine & Move

Sensory movement class for those aged 3+ with suspected or diagnosed additional needs Tuesday 16.30 – 17.00 for the younger children, then 17.15 – 18.00. Contact Hannah **07394 934911** info.imaginationarts@yahoo.com

1st Pin Green Guides & Rangers

Tuesday evening at 19.00 – 21.00. If you are interested contact Christine Noakes on **07508 015535** or email christine.guiding@hotmail.com as you need to book.

THE CENTRE

Herts Mobilisation in partnership by age UK, Carers in Herts & Alshemers Society. *Together Group Stevenage* - runs on a Tuesday & Thursdays 1.30 – 3.30pm. This group is for people living with dementia or those worried about their memory, to come along with a family member, close friend or carer. For more information contact them on Tel: **01279 427522** or Email: **central.herts@alzheimers.org.uk**

Line Dancing

Come along on Thursday at 10am or new class in the evening on Thurs 7pm and learn routines and have fun. Line dancing is a low impact way to keep fit. Classes are suitable for all. Contact Caroline on **07768 123908**

Music & Movement Group 16.15 -18.15. Workshops, developed from the **Songlines for Parkinson's project** drawing on additional research from Switch 2 Move and Sing to Beat Parkinson's. Group open to everyone. Runs term times only. Contact Maria Thomas by email **maria@music-workshop.co.uk** or phone **07391 506603**

Pilates (Sally)

This class runs on Monday evenings at 7.30pm, Tuesday evenings at 8pm and Wednesday mornings at 10am. Pilates improves posture, core strength, balance & flexibility. Classes are for men and woman. Contact Sally to book your place on **07866 451715** info on website **www.fitnesswithsally.co.uk**

Pilates (Joanne)

Low impact, mindful classes focusing on technique offering the maximum benefit suitable for complete beginners and experienced People. Suitable for men and women. Classes Wednesday 7.00- 8.00pm, and Friday 10.00-11.00 am
Contact Joanne on **07947398507** or email **mindbodycorepilates@outlook.com**
Booking essential no walk ins.

Savage Martial Arts classes will run on Tuesday. Littles for 4 to 7yrs run 16.45 – 17.15 & Juniors for 8 – 12 yrs run 17.30 – 18.15. Please Contact Andy Pollard on **07717 796819** or email **andy@savagemartialarts.co.uk** for more information.

Senior Keep Fit

Do you need to exercise but find conventional classes too difficult? Then why not join this group. It's a fun exercise group for older or less mobile adults & will keep you moving. All exercise can be done sitting in a chair. Laughter is a key ingredient in this class. Group runs on a Friday at 11am to noon. For more information contact Irene on **07802 418755**

Wellbeing Junction

We are passionate about promoting & nurturing Emotional, Physical and Mental Wellbeing. We endeavour to do this by providing a range of support to equip Children, Teenagers & Parents with self-care tools and skills to thrive in today's fast paced world. Mon in main hall 15.45 – 18.45, Thurs rear hall 15.30 – 17.30

For more information on what we do please visit our social media pages or call **0756 724521** or email **thewellbeingjunction@gmail.com**

Tiny Tykes Toddler Group

Run a group on Monday & Thursday Mornings at 9.45 – 11.15am. Come and enjoy some company and a cup of tea while your toddler plays. Group is up to school age.

YOU MUST BOOK FOR A PLACE. Contact Bridget **01438 355734**

Tippy Toes Ballet

Offer classes for kids between 2 & 5yrs. Classes are fun & allow the children to enjoy the social & physical benefits of learning ballet. Classes Wednesday from 15.30 – 17.30

Contact Nicola on **07722 865446** or see **www.tippytoesballet.co.uk**

Yoga with Kerstin

Vinyasa Flow is a dynamic yoga practice that cultivates balance, flexibility, strength & endurance. Runs on Fri 9.30 – 10.30am. Contact Kerstin on **07966 363590** or

kerstin.weiner23@gmail.com

Zumba Golds

This class is aimed at the over 50's giving you good aerobic exercise & helping you if you want to watch your weight Runs on Monday at 10 - 11am. Booking required.

Contact Charlotte on **07854 306774** or email **charlotte_x@hotmail.co.uk**

Church info

Destiny International Christian Assembly

Sunday Morning: 10.00am – 1pm

Contact Blessing on **07947 231362** Or **mikkyasue@yahoo.com**

Pastor Michael David

Our for Sale Items

We sell in the reception area paper back books for 25p, hardback books 50p each, unless otherwise priced. Puzzles 500s piece £1.50, 1000 piece £2.50 each. Some puzzles may be more and are priced up. All money goes to help us buy items for the centre. We also sell cards, standard cards for 25p, each. Now and again we have handmade cards for 50p each.

Quiz Night

Please come to the office to book
Your tickets and your food order.
Office hours 09.00 – 15.00



& Supper Night

**Saturday 15th
November 2025**

Doors open at
6.30
Quiz to start at
7pm
To 10.30 pm

Bring your
Own alcohol

Entrance
fee
£7

**Tea & Coffee
On Sale**

**Raffle £1
A Strip**

Please state if
you require food
on booking
Food arriving at
8.30pm

Menu

Breast of Chicken & Chips - £8.50
Cheese & Onion Pasty & Chips - £7.10
Chips only - £3.10

Please let us know if you require either the vegetarian meal, the
Chicken meal or just chips on booking.

Pin Green Community Association
Hampson Park Community
Centre
Broadband Phone: on 116508



**To all Our Clubs
& Regular Centre Users**

**Our Christmas Buffet + entertainment
is open to you!**

*(Limited number of spaces, once maximum reached
bookings will close)*

**Taking place on
Thursday 11th December 2025
Cost £5 per person
1PM - 3PM**

Please come to the office to
Book & Pay (cash payment only please)
Or email hampsonparke@gmail.com to secure your place!
Office open Mon to Fri
9.30 am – 3 pm



Your local Food Bank

Our collection point for the food bank is
just inside our main doors. Any donations
please pop them in the white basket.
Thank you



NOVEMBER WISHLIST

Biscuits + Treats

Tinned Meat

Tinned Fruit/Vegetables

Tinned Potatoes

Coffee/Tea/ Sugar

Micro Rice/Pot Noodles

Tinned/Kettle Soups

Tinned Spaghetti

Beans + Pulses

UHT Milk

Toiletries/Household

Stevenage Vineyard
One Church Action

Our Christmas Buffet +
entertainment is open to all our
clubs & regular centre users.
Limited number of spaces, once
maximum reached bookings will
close.
Please come to the office to book &
pay (Cash payment only)
Office open Mon to Fri 09.30 –
15.00

Give as You Live!

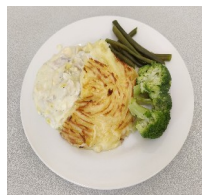
Raise Free Funds for us every time you shop online!

www.giveasyoulive.com/join/hampson-parkcc

Simply visit the above link & raise FREE funds for us every time you shop online via Give as you Live! Over 6,000 + top retailers online stores. Or you can scan the QR barcodes that are posted on the notice board which will take you to the site to register

Lunch time Meals

Freshly cooked, delicious hot meal served 3 times a week, (Tues, Thurs & Fri) Meals consists of a dinner, dessert & tea or coffee. Meals are served at 12.30 & cost £7.50 **BOOKING** is essential and must be **booked a day in advance**. If unable to make your booked meal please make sure you **cancel** your booking by 10am on the day. There now will be a charge of £2.50 on any booked meal that hasn't been cancelled. For a menu please visit our Website, or call us on 01438 354662 or pop in and see us. Call into the centre or ring us on 01438 354662 to book your meal. Office hours to book Mon to Fri 09.30 – 14.45.



Fish pie & Veg



Jam Roly Poly

Our lunch club has grown though some days are busier than others. You must book your meal in advance as only the booked numbers of meals will be cooked. All meals are cooked fresh on the day. Sometimes we have to have a cut off point regarding the number of booked meals to the amount of food we have for the meals. This may only happen on occasions and its just a warning if we say we are unable to book you in.

The lunch club is not just for the elderly it is for any one who is on their own and would like to have a meal out at a good price of £7.50 which is a main course a dessert and a hot drink. You will also get to meet new people and make new friendships.

Lunch Club Menu

Hampson Park Community Centre Lunch
Menu

November 2025

Tuesday 4th

Sweet & Sour Pork

Angle Delight

Thursday 6th

Roast Gammon

Cheesecake

Friday 7th

Chicken Cobbler

Profiteroles

Tuesday 11th

Roast Chicken

Bakewell Tart

Thursday 13th

Fish & Chips

Cake

Friday 14th

Stew & Dumplings

Jelly & Ice Cream

Tuesday 18th

Quiche & New Potatoes

Rice Pudding

Thursday 20th h

Mince & Mash

Apple Strudel

Friday 21st

Roast Pork

Gateau

Tuesday 25th

Sausage & Mash

Jam Roly-Poly

Thursday 27th

Roast Beef

Lemon Meringue

Friday 28th

Hunters Chicken

Rice Pudding

Tuesday 2nd December

Roast Gammon

Viennetta

Thursday

Friday

Meal cost £7.50.

We apologise, if for any reason the menu has to be changed. Please let us know if there are any dietary requirement when booking your dinner, thank you

There now will be a charge of £2.50 on any booked meals that haven't been cancelled before 10 am on the day.

Please note that the lunch price has now gone up.

Phone no 354662

Book before meal day or no later than 10am on the day



Hampson Park Community Centre

01438 354662

Email: hampsonparkccc@gmail.com website: www.hampsonparkccc.co.uk

Office hours Mon to Fri 9.30 - 3.00

Closed Weekends

We are in Hampson Park entrance off Webb Rise SG1 5QU

Like us on Facebook for the latest what's on news or follow us on Instagram

Parties

The community centre halls are bright and have flooring suitable for dance and other activities that need free movement yet are robust enough for a bouncy castle. Tables and chairs are supplied and are included in the cost of hire.

We take a returnable booking deposit, which will secure your booking and is held against any damage.

Because our halls are so popular, we have fixed booking slots on a Saturday & Sunday.

Kennedy suite, 3hr slot price £98, 4hr slot price £130.

Kennedy suite, Saturday's Only 6pm onwards – £36.20 per hour.

Kennedy suite, time slots, Saturday 10am - 2pm, 2.30pm – 5.30pm & Sundays 2pm – 5 or 6pm.

SPECIAL OFFER for Saturday's Only. Book both halls from 6pm - mid for £325

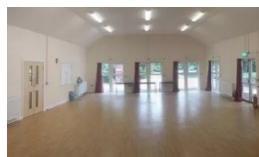
Henry Hall, 3hr slot for £73.50, 4hr slot price for £98

Henry Hall Saturdays time slots are 10.30 - 1.30pm, 2pm – 5pm, Sundays 2pm – 5pm

Hall sizes Kenndy 9m x 13m Bouncy castles no higher than 3.4m (11ft)

Rear hall 5.6m x 12m Ceiling height 3m Bouncy castles to be lower than this height

Rear hall sizes when divided, Rear hall 1, 5.6m x 7.5m. Rear hall 2, 5.6m x 4.5m



Kennedy Suite



Kitchen

(Used for Kennedy Suite
Parties only)



Rear Hall



View of the
Kitchenette
(Rear Hall)

Returnable deposit Children's Parties up to 13years of age there is a returnable deposit of £50

Parties from 6pm onwards the returnable deposit of £100 (no alcohol) or £150 (alcohol) Deposits are required with 48 hrs of booking your party date. This is non-refundable if the function is cancelled within 2 weeks of the booked date. 10% of the deposit is retained if cancelled with more than 2 weeks notice.

We also hire out a sound system and projector if required. Ask for details. Between the ages of 16th to 21st parties there are special conditions. Please ask for details on booking.